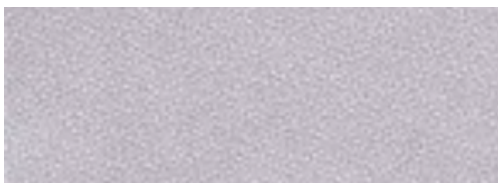




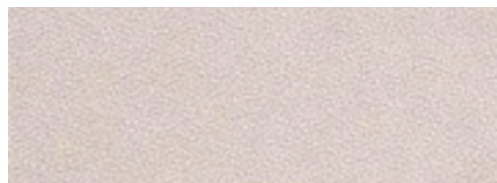
Tissus stock

logiflex

NATURE



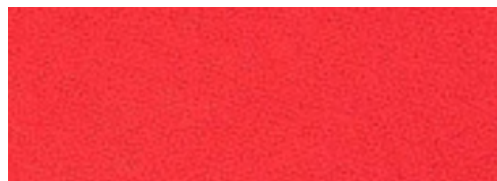
Fog / Brume
NA01



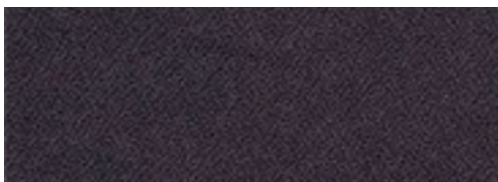
Sand / Sable
NA04



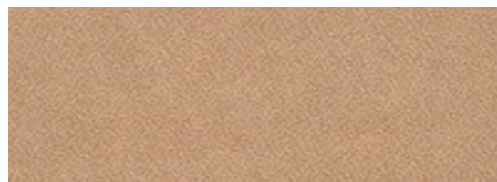
Azure / Azur
NA07



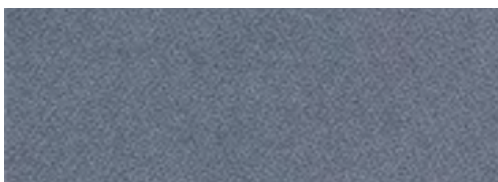
Poppy / Coquelicot
NA10



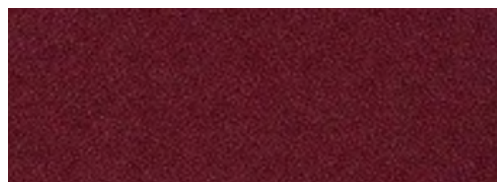
Squall / Orage
NA02



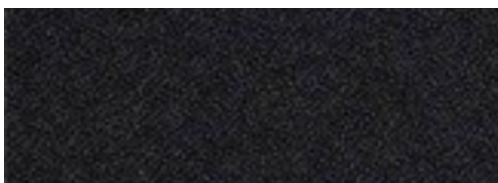
Mole / Taupe
NA05



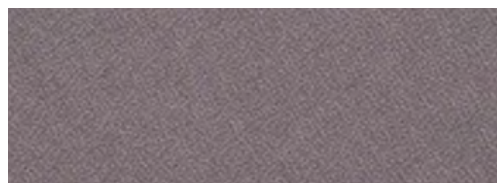
Storm / Rafale
NA08



Plum / Prune
NA11



Black / Noir
NA03



Ash / Cendre
NA06



Navy / Marine
NA09



Forest / Forêt
NA12

DILLON



Graphite
DL69



Black
DL99



Stratus
DL03

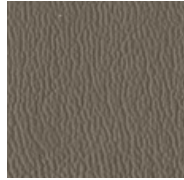


Steel
DL05

HATHAWAY



Nickel
HT05



Smoky
HT69

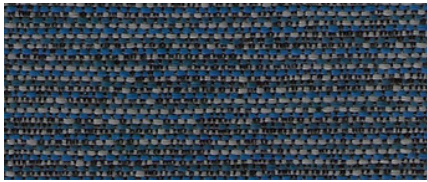


Onyx
HT99

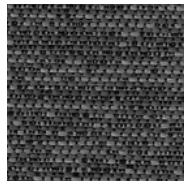


Fog
HT03

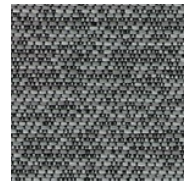
OASIS



Arctic
OA47



Carbon
OA83



Coin
OA82

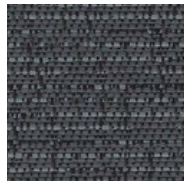


Infinity
OA92

FREQUENCY



Smokescreen
FQ82



Cadet
FQ81

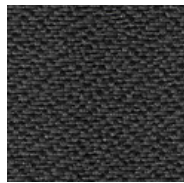


Navy
FQ41

GENESIS



Eclipse
GE46



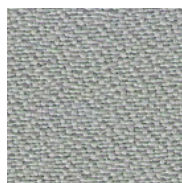
Carbon
GE84



Moonwalk
GE82



Flint
GE93

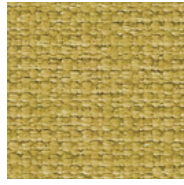


Cinder
GE83

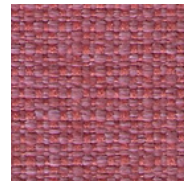
CLOUD NINE



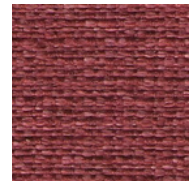
Artesian
CL53



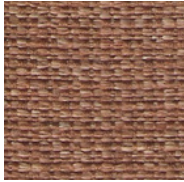
Dijon
CL25



Rose Grenat
CL30



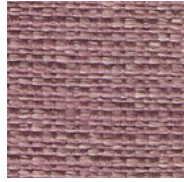
Flamenco
CL35



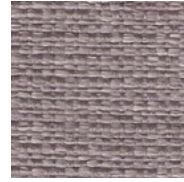
Coral
CL75



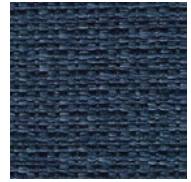
Aubergine
CL37



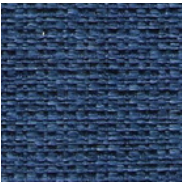
Rose
CL36



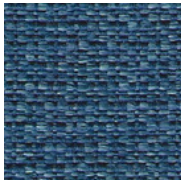
Iris
CL38



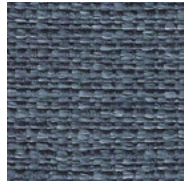
Pluto
CL40



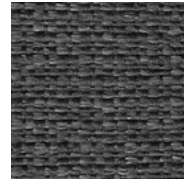
Space
CL42



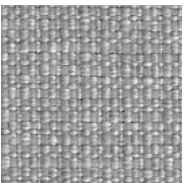
Galaxy
CL49



Frost
CL41



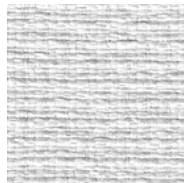
Charcoal
CL86



Argent
CL85



Poplar
CL18



Angora
CL16

CROSSLINK



Cornflower
CK42



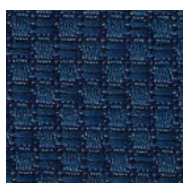
Espresso
CK74



Rosewood
CK18



Alabaster
CK17



Midnight
CK41

SPECIFICATION / SPÉCIFICATIONS	DILLON	HATHAWAY	OASIS	FREQUENCY
Composition	100% Polyurethane	100% PVC Vinyl	65% Recyc. Polyester 35% Polyester	65% Recyc. Polyester, 35% Polyester
Backing / Dos	70% Polyester, 30% Cotton	85% Polyester, 15% Cotton	Nvirosoft acrylic	Nvirosoft acrylic
Weight-linear yard / Poids-verge linéaire	20.16 oz	32.12 oz	10.0 oz	10.0 oz
Flammability / Inflammabilité	CA - Tech. bull. 117-2013, UFAC Class 1, MVSS 302, NFPA 260 Class 1	CA - Tech. bull. 117-2013, UFAC Class 1, NFPA 260 Class 1	CA - Tech. bull. 117-2013	CA - Tech. bull. 117-2013
Seam slippage ASTM D4034 / Résistance des coutures ASTM D4034	Warp: 92 lbs Fill: 77 lbs	Warp: 44 lbs Fill: 53 lbs	Warp : 76 lbs Fill : 66 lbs	Warp : 79 lbs Fill : 65 lbs
Tensile strength ASTM D5034 / Résistance à la rupture ASTM D5034	Warp: 112 lbs Fill: 70 lbs	Warp: 106 lbs Fill: 110 lbs	Warp : 157 lbs Fill : 194 lbs	Warp : 172 lbs Fill : 254 lbs
Color fastness to crocking AATCC 8 / Résistance au dégorgeement AATCC 8	Dry / Sec : Class 4 Wet / Humide : Class 4	Dry / Sec : Class 4 Wet / Humide : Class 4	Dry / Sec : Class 5 Wet / Humide : Class 5	Dry / Sec : Class 5 Wet / Humide : Class 5
Color fastness to light AATCC 16 Résistance à la lumière AATCC 16	Class 4 / 200 hrs min.	Class 4 / 200 hrs min.	Class 5 / 40 hrs min.	Class 5 / 40 hrs min.
Abrasion resistance ASTM D4157 / Résistance à l'abrasion ASTM D4157	200,000+ D.R. / D.F.	100,000 D.R. / D.F.	250,000+ D.R. / D.F.	50,000+ D.R. / D.F.
Treatment / Traitement	Antimicrobial / Antimicrobien	Antimicrobial / Antimicrobien	Greenshield®	Greenshield®
Cleaning code / Nettoyage	WS	WS	WS	WS
Disinfection / Désinfection	Disinfectant, peroxide, bleach/water (20%/80%) / Désinfectant, peroxyde, javellisant/eau (20%/80%)	Disinfectant, peroxide, bleach/water (20%/80%) / Désinfectant, peroxyde, javellisant/eau (20%/80%)	Disinfectant, peroxide, bleach/water (10%/90%) / Désinfectant, peroxyde, javellisant/eau (10%/90%)	Disinfectant, peroxide, bleach/water (10%/90%) / Désinfectant, peroxyde, javellisant/eau (10%/90%)
Samples / Échantillons	Culp Contract (336) 889-5161	Culp Contract (336) 889-5161	Logiflex 1 877 864 9323	Logiflex 1 877 864 9323

SPECIFICATION / SPÉCIFICATIONS	GENESIS	CLOUD NINE	CROSSLINK	NATURE
Composition	100% Recyc. Polyester Repreve Our Oceans	65% Recyc. Polyester 35% Polyester	85% Recyc. Polyester 15% Polyester	100% Polyester
Backing / Dos	Nvirosoft acrylic	Nvirosoft acrylic	Nvirosoft acrylic	
Weight-linear yard / Poids-verge linéaire	13.0 oz	15.0 oz	15.0 oz	11.2 oz
Flammability / Inflammabilité	CA - Tech. bull. 117-2013	CA - Tech. bull. 117-2013	CA - Tech. bull. 117-2013	CA - Tech. bull. 117 CS-191-53
Seam slippage ASTM D4034 / Résistance des coutures ASTM D4034	Warp: 90 lbs Fill: 79 lbs	Warp: 64 lbs Fill: 77 lbs	Warp : 97 lbs Fill : 48 lbs	
Tensile strength ASTM D5034 / Résistance à la rupture ASTM D5034	Warp: 304 lbs Fill: 265 lbs	Warp: 137 lbs Fill: 327 lbs	Warp : 284 lbs Fill : 242 lbs	Warp : 191 lbs Fill : 138 lbs
Color fastness to crocking AATCC / Résistance au dégorgeement AATCC 8	Dry / Sec : Class 4.5 Wet / Humide : Class 5	Dry / Sec : Class 4.5 Wet / Humide : Class 5	Dry / Sec : Class 4.5 Wet / Humide : Class 5	Dry / Sec : Class 4.5 Wet / Humide : Class 5
Color fastness to light AATCC 16 Résistance à la lumière AATCC 16	Class 4-5 / 40 hrs min.	Class 4-5 / 40 hrs min.	Class 4-5 / 40 hrs min.	
Abrasion resistance ASTM D4157 / Résistance à l'abrasion ASTM D4157	500,000+ D.R. / D.F.	200,000+ D.R. / D.F.	100,000 D.R. / D.F.	100,000 D.R. / D.F.
Treatment / Traitement	Greenshield®	Greenshield®	Greenshield®	
Cleaning code / Nettoyage	WS	WS	WS	S
Samples / Échantillons	Logiflex 1 877 864 9323	Logiflex 1 877 864 9323	Logiflex 1 877 864 9323	Logiflex 1 877 864 9323



1235 Saint-Roch N., Sherbrooke, QC J1N 0H2 Canada
T: 1.877.864.9323 | F: 1.800.474.7830 | logiflex.ca