



millenium

Practical, versatile and **modern.**

logiflex

Combine **functionality**,
accessibility and **timelessness**
in the same space.





Contemporary desks for functional and affordable workspaces.



MILLENIUM-C019D



MILLENIUM-C021

VERSATILITY AT YOUR FINGERTIPS

Perfect for all areas of your workspace, the Millenium collection meets the requirements of any work environment.

Combine your Millenium storage with an Elevation Plus desk for an ergonomic and elegant layout.



Functional and
contemporary spaces.



The storage options available in the Millenium furniture collection meet everyone's personal needs.

WORKSPACES THAT FIT YOUR NEEDS

Whether bookcases, hutches or drawers, Millenium furniture allows you to combine different storage options for a clear and well-organized workspace.

When private office
meets **collaboration.**





MILLENIUM-C013D



MILLENIUM-C013F

Effortlessly transition from your private workspace to a creative collaboration area, within the same layout!

The Millenium collection furniture complements various Logiflex collections. Have you recognized our Volt furniture with metal handles?



Take **customization** to
the **next level** for your **spaces**.



**With Millenium,
there's no need
to adapt to
furniture; let the
furniture adapt
to you.**

**Square legs?
Certainly.**

**Angled legs?
No problem!**



MILLENIUM-C013E



MILLENIUM-C016

HAVE FUN WITH COLORS, TEXTURES, AND SHAPES

Show your personality through your layout with Leo modular benches: light and easy to move.





MILLENNIUM-C025

**Go beyond your
traditional office.**

THINK OUTSIDE THE BOX

Explore the possibilities that Millenium offers, redefining the way you use our furniture. Pair different storage options to furnish the perfect space!

Create an environment where work, strategy and storage can meet.



A timeless
classic.

ILLUSTRATED FINISHES IN THE BROCHURE

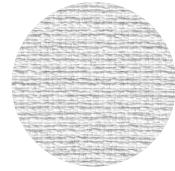
FABRICS



Stock Fabrics
Crosslink, Alabaster



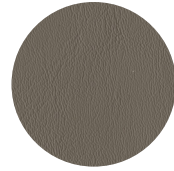
Stock Fabrics
Cloud Nine, Poplar



Stock Fabrics
Cloud Nine, Angora



Stock Fabrics
Cloud Nine, Aubergine

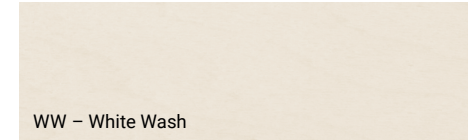


Stock Fabrics
Hathaway, Smoky



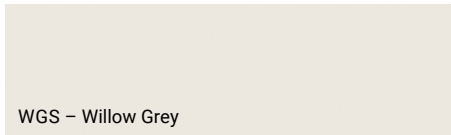
Stock Fabrics
Hathaway, Fog

WOOD



WW – White Wash

LAMINATES



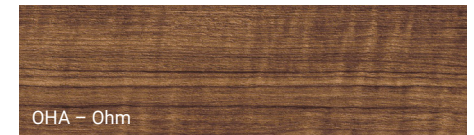
WGS – Willow Grey



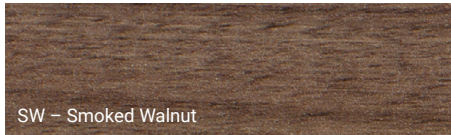
DOO – Doshia



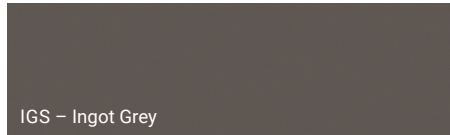
KAY – Kali



OHA – Ohm



SW – Smoked Walnut

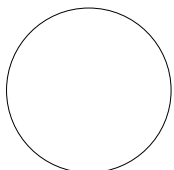


IGS – Ingot Grey



C – Slate

METALS



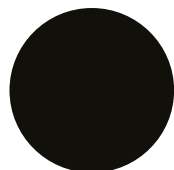
WH
White



CHR
Chrome



SN
Satin Nickel

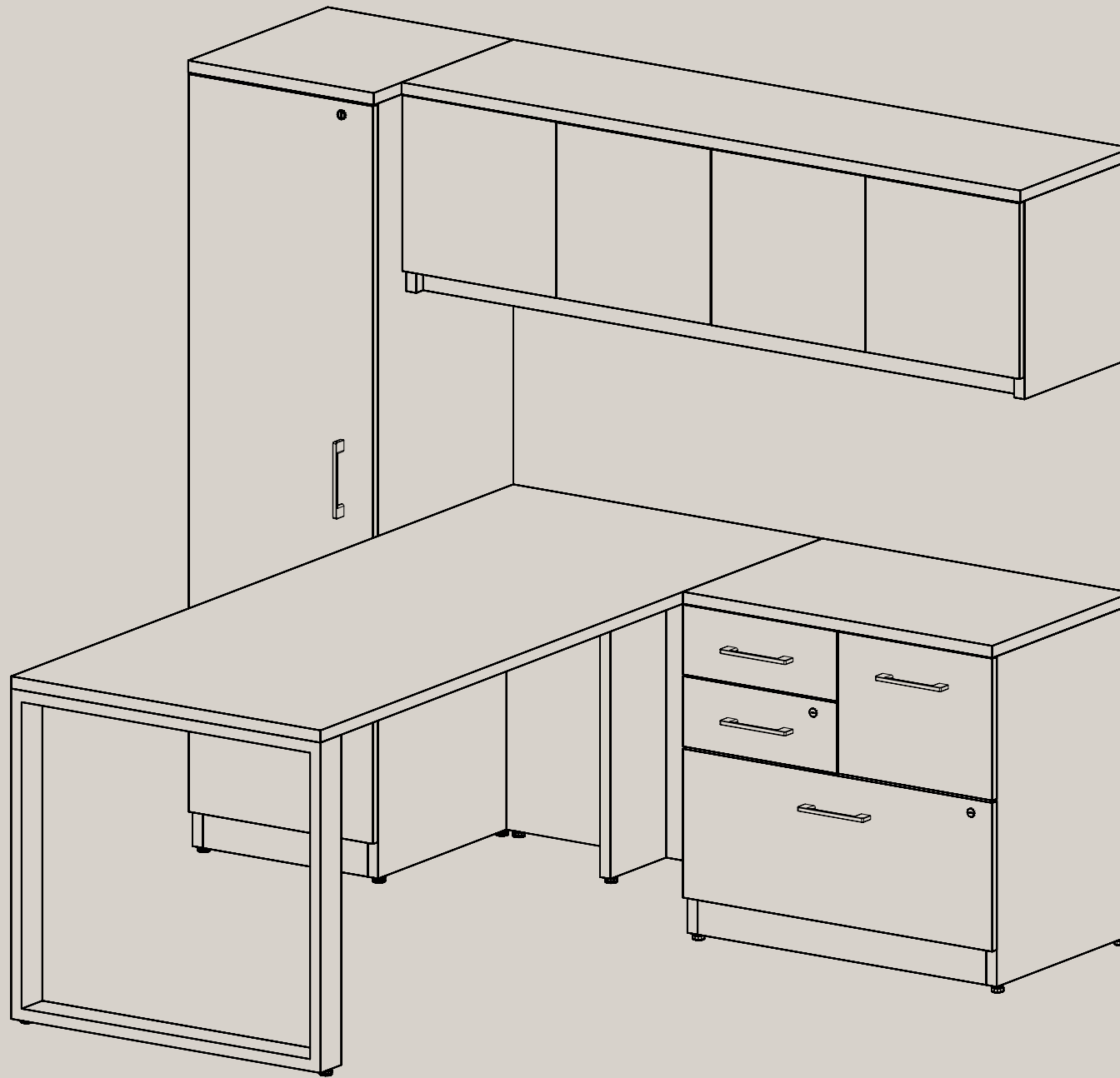


BL
Black

COLORS AND FINISHES GUIDE

A wide selection of additional finishes is available in our Colors and finishes Guide.

[View online!](#)



logiflex

1235 St-Roch N., Sherbrooke QC J1N 0H2 Canada
T : 1.877.864.9323 | F : 1.800.474.7830 | logiflex.ca

As our product line is constantly evolving and expanding,
we recommend that you visit logiflex.ca for updates.

February 2024