



# Mayer Fabrics

All Seasons

logiflex <sup>↳</sup>

# ALL SEASONS



AS-047  
Beige



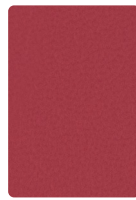
AS-007  
Snow White



AS-017  
Coffee Cream



AS-002  
Marigold



AS-008  
Very Berry



AS-005  
Coal



AS-061  
New Burgundy



AS-077  
Reflection



AS-087  
Saddle Tan



AS-009  
Nasturtium



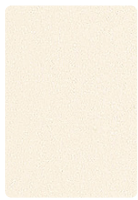
AS-018  
Magenta



AS-015  
Wood Violet



AS-051  
Port



AS-027  
Bone White



AS-097  
Camelback



AS-019  
Persimmon



AS-021  
Candy Apple



AS-025  
Grape



AS-071  
Cordovan



AS-037  
Wheat



AS-049  
Manzanita



AS-039  
Red Cent



AS-001  
Tomato



AS-035  
Purple Iris



AS-041  
Burgundy



AS-057  
Natural



AS-029  
Deep Clay



AS-031  
Berry



AS-011  
American Beauty



AS-045  
New Purple



AS-055  
Black Plum

# ALL SEASONS



AS-123  
Green Tea



AS-023  
Seafoam



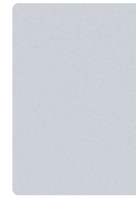
AS-067  
Pumice



AS-004  
Aqua



AS-114  
Cerulean



AS-016  
Dream



AS-107  
Bucksuede



AS-043  
Jade



AS-053  
Vizcaya Palm



AS-014  
Light Teal



AS-024  
Neptune



AS-026  
Lite Gray



AS-000  
Outback



AS-073  
Sea Grass



AS-033  
Leapfrog



AS-054  
Blue Nile



AS-064  
Marina



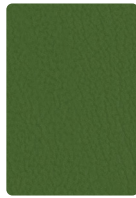
AS-046  
Gray



AS-010  
Allspice



AS-093  
Raintree



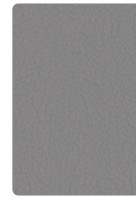
AS-133  
Grass



AS-034  
Horizon Blue



AS-084  
Bluejay



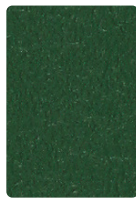
AS-036  
Gris



AS-013  
Tea Leaf



AS-063  
Everglade



AS-103  
Emerald



AS-044  
Colonial Blue



AS-094  
Regal Blue



AS-056  
Cadet



AS-020  
Chocolate



AS-083  
Harbour



AS-113  
Hunter Green



AS-104  
Blueberry



AS-124  
Royal Blue



AS-066  
Slate



AS-030  
Fudge



AS-040  
Otter



AS-003  
Spruce



AS-134  
Midnight Blue



AS-074  
Navy



AS-006  
Black

# ALL SEASONS

---

## TECHNICAL INFORMATION

Application: Upholstery

Content: 88% Vinyl - Phthalate Free face, 12% Polyester backing

Weight: 36 oz./linear yard / 1116.12 g/lm

Width: 54 inches / 137 cm

Finish: Soil & Stain Resistant Top Coat with Ink Resistant Technology

Directional: No

Shown Railroaded: No

---

## PERFORMANCE

Abrasion: Exceeds 1,300,000 Double Rubs  
(Wyzenbeek/Cotton Duck)

Abrasion test results exceeding ACT Performance Guidelines are not an indicator of product lifespan. Multiple factors affect durability and appearance retention.

Crocking: Dry: Grade 4 min. / Wet: Grade 4 min.

Colorfastness to Light AATCC 16, Option 3: Grade 5 at 200 hours  
CFFA-2/QUV: 650 hours

---

## FLAMMABILITY

California Technical Bulletin 117-2013

NFPA 260/UFAC Class 1

BIFMA

FMVSS 302

IMO 2010 FTP Code MSC.307(88) Part 8, 3.1 & 3.2

---

## REDUCED ENVIRONMENTAL IMPACT

This product is GREENGUARD Certified for low chemical and particle emissions to UL standard UL 2818 and may contribute to LEED certification. For complete information visit [mayerfabrics.com](http://mayerfabrics.com).

No FR Additives PFAS Free

---

## CLEANING INFORMATION

WS: Water/Solvent Cleaner

BC: Bleach Cleanable –

1 part bleach, 9 parts water = 10% bleach, 90% water solution.

CFC: Coated Fabrics Cleaning – Refer to Mayer website for complete cleaning info.

---

## DYE TRANSFER DISCLAIMER

Certain clothing and accessory dyes (such as those used on denim jeans) may migrate to lighter colors. This phenomenon is increased by humidity and temperature and is irreversible. Mayer Fabrics will not assume responsibility for dye transfer caused by external contaminants. Please check compatibility when using this product in combination with painted or varnished surfaces.

---

## ADDITIONAL INFORMATION

Custom Colors: All patterns can be custom colored. Minimum yardage applies.

Warranty: Please refer to the Mayer website for warranty information by pattern.

Complete and current product information available at [mayerfabrics.com](http://mayerfabrics.com).

---

LOGIFLEXASCD ©1988 MF1123



logiflex

**MAYERFABRICS**